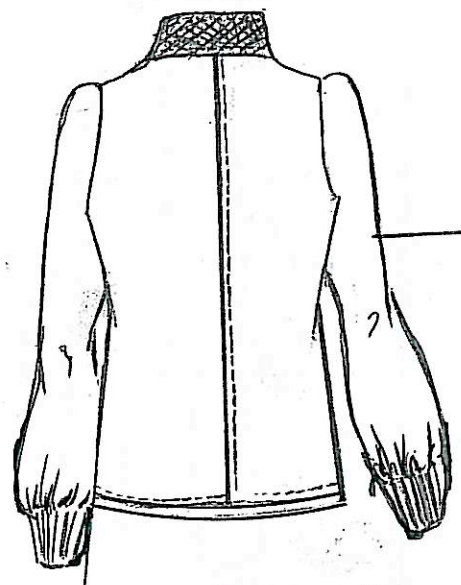
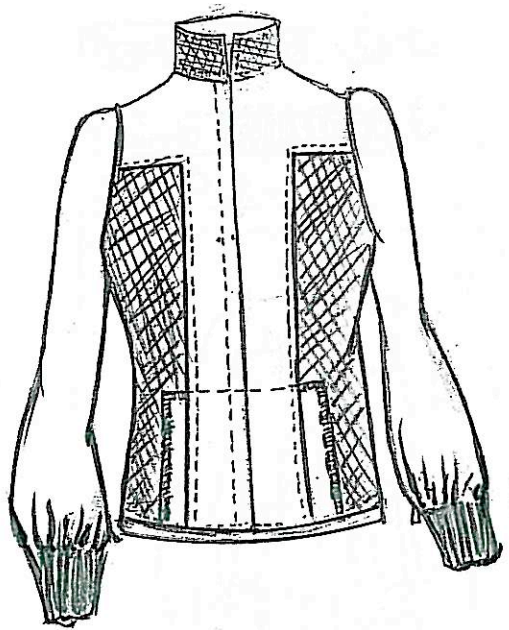
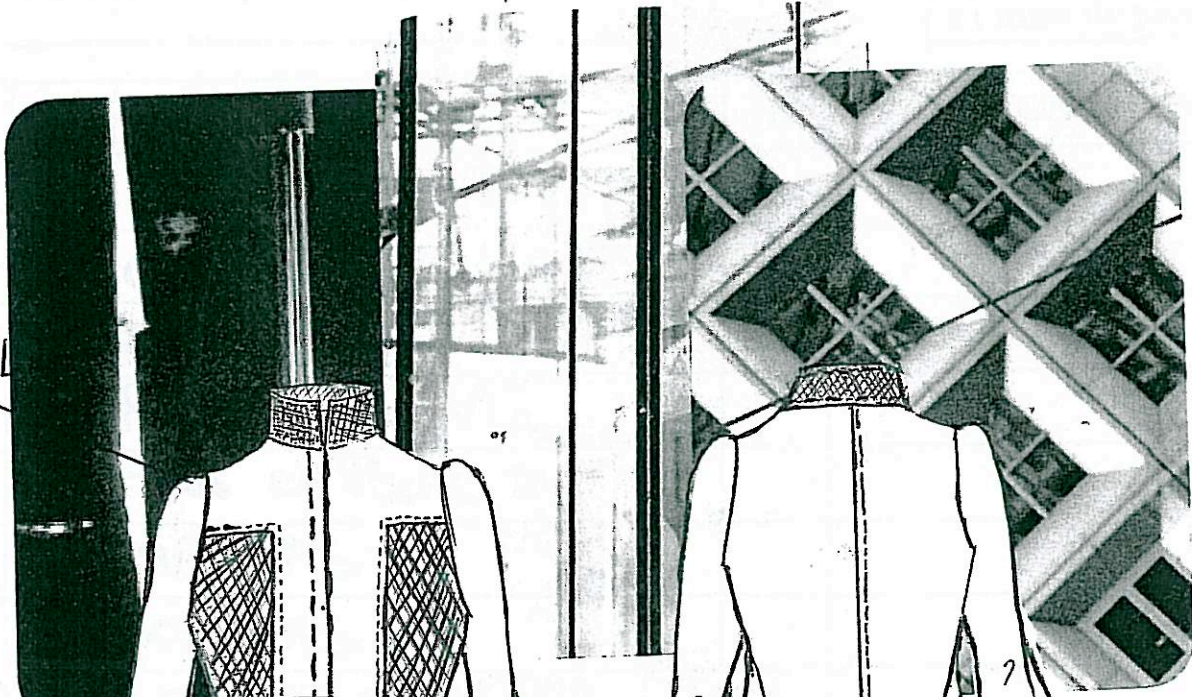


Veste / Manteau femme

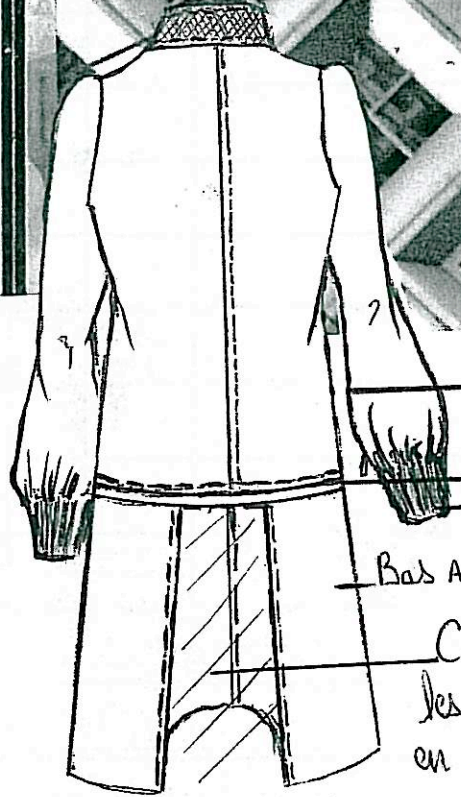
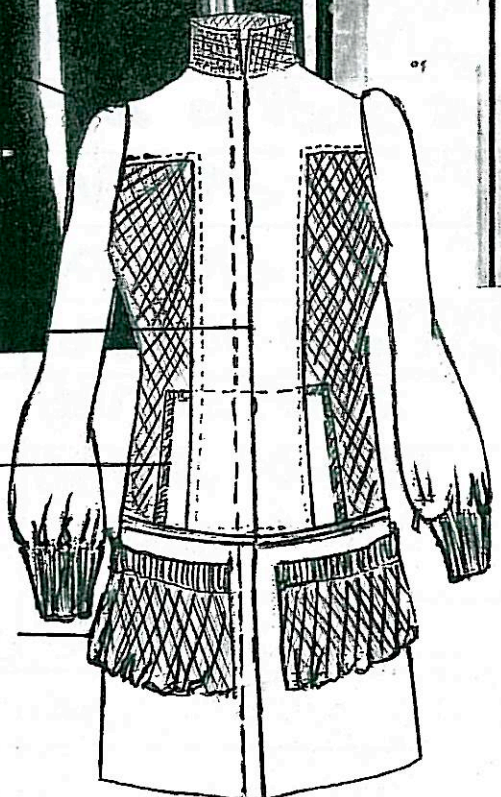
Manteau 3/4 en feutre et lainage maille, bas amovible avec poches ; transformable en veste Col officier et fermeture centrale en velcro



Veste



Manteau 3/4



ouverture velcro

Bord cote Poche

Poche

ouverture ZIP sous manche

ZIP Bord cote

Bas Amovible

Creu pour les personnes en fauteuil

